



ClearWave

Activation

Hygienic, Touchless Automatic Door Activation Switch

Non-Touch microwave technology door activation switch designed for installations where hygiene is of paramount importance such as white room, food processing and chemical industry applications



- **Hygienic Door Activation**
Adjustable touchless detection range from 5-40cm
- **Versatile**
Three faceplate stickers included to suit a variety of installation environments
- **Water Resistant**
Water resistant foam gasket protects the switch from water damage
- **Sleek Design**
Extremely small, light and attractive
- **Ease of Installation**
No requirement for back box, completely flush mounted for zero wall damage (see illustration overleaf)



ClearWave

Activation

Technical Specification

Stickers Included



Sticker Option 1



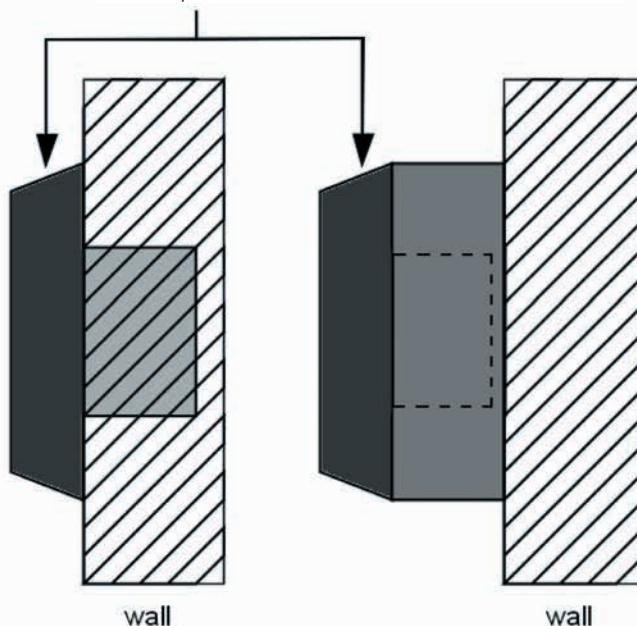
Sticker Option 2



Sticker Option 3

Model	ClearWave Pedestrian Door Activation	
Detection Method	K-Band 24.125Ghz - Microwave Motion Detection	
Detection Range	5~40cm ±3~5cm	
IP Rating	IP55	
Power Supply	12 to 30V DC, 12 to 24V AC	
Current Consumption	40mA(DC24V)	
Power	<1.4W	
Transmitting Power	16 dBm	
Relay Output	1C Type Relay (one Switching Contact)	
Output Hold Time	1.2sec (PULSE mode)	
Max. Switching Voltage	125V AC / 60V DC	
Max. Switching Current	1A	
Min. Detection Speed	0.03m/s	
Sensitivity Adjustment	Potentiometer Low to High	
Operating Modes	Toggle or Pulse	
LED Indication Detection:	Power On	= Green
	Detecting	= Blue
	Initialization after power on	= Blue Flashing
Operating Temperature	20°C to +60°C, (-4°F to 131°F)	
Operating Humidity	0 to 90%	
Weight	80g + 160g	
Available Colours	Cream: Product Code	= ClearWave
Accessories Provided	Label A: Hand Logo	
	Label B: Wheelchair Logo	
	Label C: Wave to Open Text	
	Cable	
	Installation Instructions	

Similar Competitors Products



ClearWave

